

# Compact

Versatile solutions for small spaces



## Unique Features



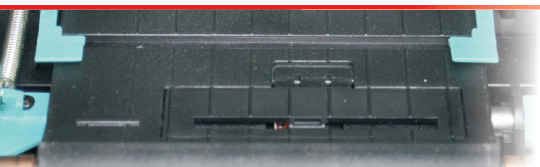
Large Capacity — easy loading less often for increased production



Top Quality Stepping Motor — ensures superb performance



DIP Switches — easy setting of common functions



Adjustable Reflective Sensor with Optional Adapter — high flexibility

# Postek

RUGGED PARTS, DURABLE MACHINES

## C168 Series

Compact Barcode Label Printer

Long lasting durability and ease of use, plus affordability are the hallmarks of the C168 Series direct thermal/thermal transfer compact printers.

These small power performers feature an astonishing large ribbon capacity of 360 M that limits downtime for reloading. Furthermore, as standard, these printers include an external media stand accommodating larger media rolls and optimizing production uptime. All models are equipped for fast printing speeds and carry a powerful 32-bit processor enhancing efficient label throughput.

3 function buttons and 3 LED lamps make operations easy. Plus, DIP switches offer set-it-and-forget-it convenience. The two printing modes and an adjustable Reflective Media Sensor affords users a wider range of media choices and printing flexibility; the optional media adapter further extends media choices to accommodate extra thin widths to a minimum of 8 mm.

Under the hood is a solid frame and a highly reliable motor and transmission system. These structural components produce the benefits of enhanced stability, top quality output, minimum downtime and low service costs.

For reliable performance with durability to trust, count on the dynamic:

Postek C168 Series.

## Industry Solutions

- |                              |                              |
|------------------------------|------------------------------|
| Asset Management             | Order Labeling               |
| Compliance Labeling          | Prescription Labeling        |
| Fleet Vehicle Identification | Product Labeling and Tagging |
| Healthcare                   | Shipping / Receiving         |
| Information Labels           | Retail Point of Sale         |
| Inventory Control            | Transportation & Logistics   |
| Lab Specimen Labeling        | Work-in-Process Tracking     |
| Medical Record Labeling      |                              |



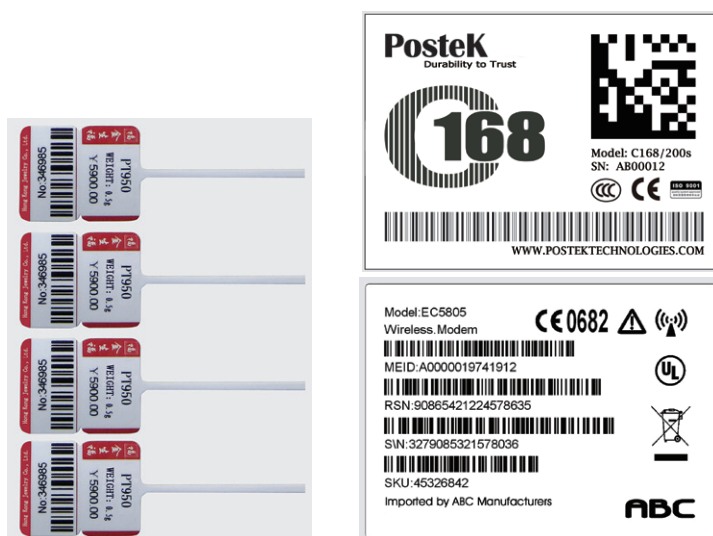
## Specifications

Model	C168/200s	C168/300s
Printing Method	Direct Thermal and Thermal Transfer	
Resolution	203 dpi (8 dots/mm)	300 dpi (11.8 dots/mm)
Printing speed	4 ips (101.6 mm/s)	3 ips (76.2 mm/s)
Max printing width	4.25" (108 mm)	4.17" (106 mm)
Max printing length	157" (4000 mm)	79" (2000 mm)
CPU / Memory	32-bit ARM Processor / 2 MB FLASH ROM, 8 MB SDRAM	
Media	Width: 4.3" (110 mm) max., 0.98" (25 mm) min., or with adapter .31" (8 mm) min. Supply roll: OD 4" (102 mm) max., ID 1" (25.4 mm) min. Thickness: 0.003" ~ 0.007" (0.08 ~ 0.18 mm), including liner	
Ribbon	Ribbon roll: OD 3" (76.2 mm) max., ID 1" (25.4 mm) core Max width: 4.3" (110 mm); Max length: 1181.10' (360 m). Ink side: Out	
Media Sensors	Reflective (Adjustable)	
Fonts	Five built-in ASCII fonts	
Bar Code Types	ID: Code 39, Code 93, Code 128/subset A,B,C Codabar, Interleave 2 or 5 UPC A/E 2 and 5 add-on, EAN-13/8/128, UCC-128 2D: MaxiCode, PDF 417, Data Matrix, QR	
Interfaces	RS-232 Serial, USB	
Dimensions	W 9.3" (236 mm) x D 11.4" (291 mm) x H 7.8" (199 mm)	
Optional*	External Rewinder, Internal 10/100 Ethernet Card, Media Guide Adapter, Peeler Kit, and Rotary Cutter	
Warranty	Printers (except normal wear items) and spare parts: 36 months Wear items (printhead, platen roller) and optional accessories: 12 months	

\* Some optional items may require minimum quantities and/or factory installation. Please contact a Postek sales representative for complete details.

## Label Examples

All specifications are subject to change without notice.



Visit us at [www.postektechnologies.com](http://www.postektechnologies.com)

# Postek

Postek Technologies, Inc.  
301 N. Pine Meadow Dr., Suite D T | (407) 843.9939  
DeBary, FL 32713 F | (407) 843.9938